

LOT 1

Date Installed: 1-27-06
Installed by: Jeff McBride
Inspected by: Rex Moll

Apt. # 310
Storm Tap

CONCRETE DRIVE REPLACEMENT

STA 0+29.28 BACK, 58.55' LT ((STORM))
CB RIM ELEV = 680.15
4" CPP INV ELEV = 678.95 E

STA 0+12.64 BACK, 11.26' LT ((STORM))
CI RIM ELEV = 678.68
10" RCP INV ELEV = 674.93 SE
6" VIT INV ELEV = 674.98 W
10" RCP INV ELEV = 674.88 N
6" CPP INV ELEV = 675.68 NE

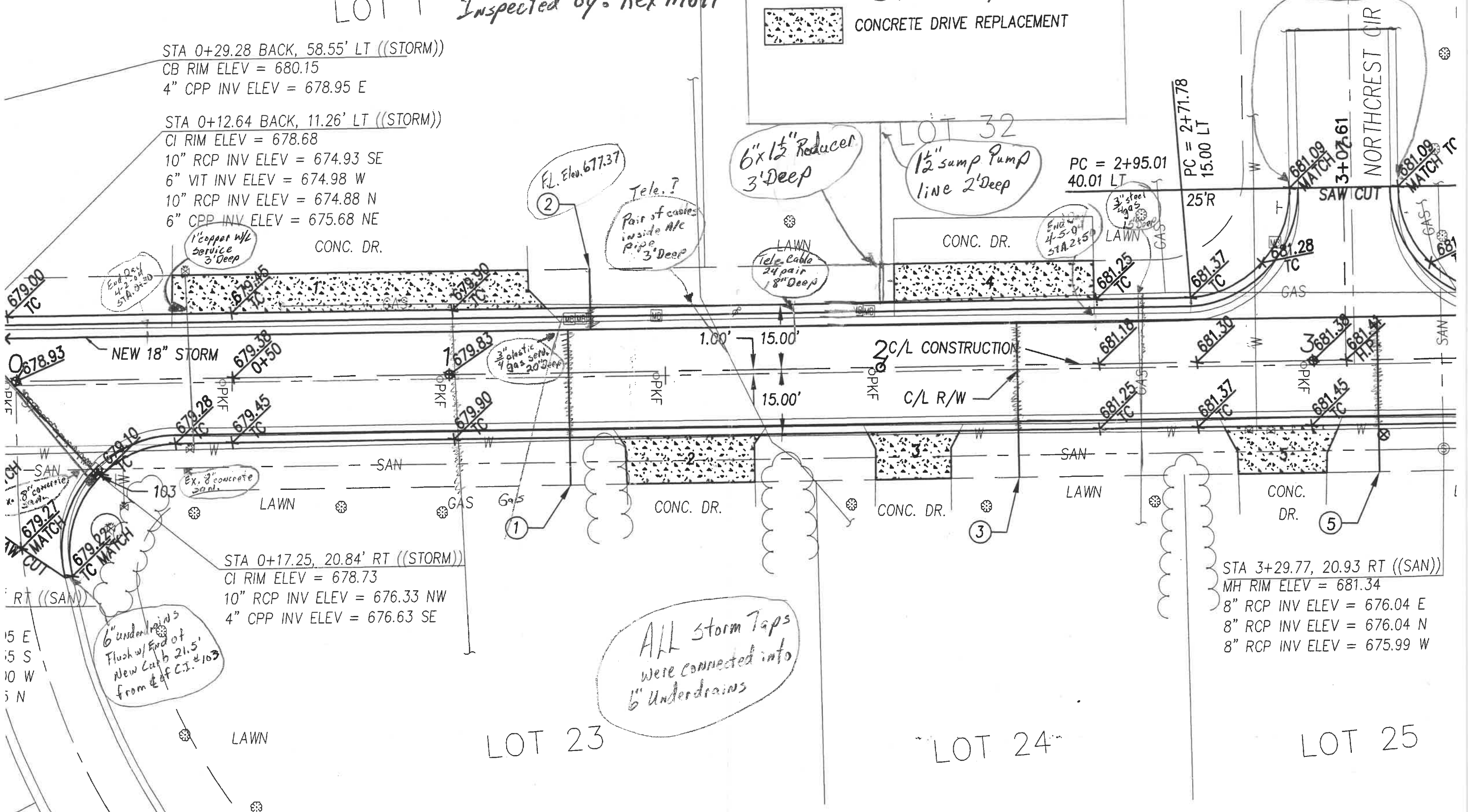
CONC. DR.

PC = 2+95.01
40.01 LT

PC = 2+71.78
15.00 LT

6" underdrains both side
1' L.F. beyond new curb

NORTHCREST CIR



Fl. Elev. 677.37
②

Tele.?
Pair of cables
inside A/C
Pipe
3' Deep

6" x 1 1/2" Reducer
3' Deep

1 1/2" samp Pump
line 2' Deep

LAWN
Tele. Cable
24 pair
18" Deep

3" steel
4-5-01
STA 2+5

LAWN
3" steel
15' Deep
GAS

End Day
4-2-04
STA 0+30

1" copper w/c
service
3' Deep

3" plastic
4" gas serv.
20' Deep

2 C/L CONSTRUCTION
C/L R/W

STA 0+17.25, 20.84' RT ((STORM))
CI RIM ELEV = 678.73
10" RCP INV ELEV = 676.33 NW
4" CPP INV ELEV = 676.63 SE

STA 3+29.77, 20.93 RT ((SAN))
MH RIM ELEV = 681.34
8" RCP INV ELEV = 676.04 E
8" RCP INV ELEV = 676.04 N
8" RCP INV ELEV = 675.99 W

6" underdrains
Flush w/ End of
New Curb 21.5'
from E of C.I. #103

ALL storm Taps
were connected into
6" Underdrains

LOT 23

LOT 24

LOT 25